



MARINA V

P A R I S

COLLECTION

2024

A woman with dark hair pulled back is sitting on a white sheepskin chair. She is wearing a colorful knit sweater with panels of red, purple, brown, and cream. The sweater has a dark brown ribbed crew neck, cuffs, and hem. The background is a plain, light-colored wall.

KNITWEAR
COLLECTION

M
MARINA V
PARIS

COLLECTION
2024





MARINA V
PARIS



BASICS



FW24-001

SIZES: 1-2-3-4-5-6

COMPOSITION: 80% VISCOSE 20% PA

PRICE: 20,00 £

* Same yarn skirt FW24-601



LIGHT BLUE



PINK



ORANGE



YELLOW



GREEN



EMERALD



MAGENTA



BROWN



BEIGE



IVORY



BLACK



GREY



CAMEL

BASICS



FW24-002

SIZES: 1-2-3-4-5-6

COMPOSITION: 80% VISCOSE 20% PA

PRICE: 20,00 £

* Same yarn skirt FW24-601



MAGENTA



PINK



ORANGE



YELLOW



GREEN



EMERALD



LIGHT BLUE



BROWN



BEIGE



IVORY



BLACK



GREY



CAMEL

BASICS



FW24-003

SIZES: 1-2-3-4-5-6

COMPOSITION: 80% VISCOSE 20%

PA

PRICE: 20,00 £

* Same yarn skirt FW24-601



MAGENTA



PINK



ORANGE



YELLOW



GREEN



EMERALD



LIGHT BLUE



BROWN



BEIGE



IVORY



BLACK



GREY



CAMEL

BASICS



FW24-004

SIZES: 1-2-3-4-5-6

COMPOSITION: 80% VISCOSE 20% PA

PRICE: 20,00 £

* Same yarn skirt FW24-601



MAGENTA



PINK



ORANGE



YELLOW



GREEN



EMERALD



LIGHT BLUE



BROWN



BEIGE



IVORY



BLACK



GREY



CAMEL

PULLOVERS



FW24-005

SIZES: 1-2-3-4-5

COMPOSITION: 80% VISCOSE 20% PA

PRICE: 29,00 £

* Same yarn skirt FW24-601



MAGENTA



IVORY



ORANGE



YELLOW



GREEN



CAMEL



BLACK



LIGHT BLUE

PULLOVERS

FW24-006

SIZES: 1-2-3-4-5-6
COMPOSITION: 50% AC
45% PA
5% WOOL
PRICE: 31,00 £



* Same yarn skirt FW24-602
Same yarn pants FW24-622

FW24-007

SIZES: 1-2-3-4-5
COMPOSITION: 48%
VISCOSE 27% PL
PRICE: 31,00 £



* Same yarn pants FW24-620



**EMERALD
(GREY STRIPES)**



**EMERALD
(BACK)**



**ORANGE
(BEIGE STRIPES)**



**CAMEL
(BLACK STRIPES)**



BEIGE



LIGHT BLUE



GREEN



YELLOW

PULLOVERS

FW24-008

SIZES: 1-2-3-4-5
COMPOSITION: 50% AC
45% PA
5% WOOL
PRICE: 34,00 £

* Same yarn pants FW24-622



BEIGE
(BLACK PATTERN)



BLACK
(PINK PATTERN)

FW24-009

SIZES: 1-2-3-4-5
COMPOSITION: 68% AC
28% PL
4% ELASTANE
PRICE: 33,00 £



GREEN
(BEIGE BODY)



BLACK
(IVORY BODY)



BROWN
(LIGHT BLUE BODY)

PULLOVERS

FW24-050

SIZES: 1-2-3-4-5-6
COMPOSITION: 50% AC
45% PA
5% WOOL
PRICE: 33,00 € £

* Same yarn pants FW24-622



GREEN
(GREY & IVORY)



BEIGE
(IVORY & GREY)



CAMEL
(BLACK & ORANGE)

FW24-051

SIZES: 1-2-3-4-5-6
COMPOSITION: 50% AC
45% PA
5% WOOL
PRICE: 34,00 £

* Same yarn pants FW24-622



CAMEL



EMERALD



IVORY



BLACK

PULLOVERS

FW24-052

SIZES: 1-2-3-4-5
COMPOSITION:
60% PL 40% VISCOSE
PRICE: 33,00 £



EMERALD



BLACK



BEIGE



MAGENTA

FW24-053

SIZES: 1-2-3-4-5
COMPOSITION:
64% PA
23% PL
13% VISCOSE
PRICE: 34,00 £



BEIGE



PINK



BLACK



IVORY

PULLOVERS

FW24-054

SIZES: 1-2-3-4-5
COMPOSITION: 38% PA
30% CASHMERE 27%
VISCOSE 5% WOOL
PRICE: 44,00 £



* Same yarn pants FW24-623

* We will add side slits in production



IVORY



GREY



LIGHT BLUE



ORANGE



CAMEL



BLACK

FW24-055

SIZES: 1-2-3-4-5
COMPOSITION: 50% AC
45% PA
5% WOOL
PRICE: 34,00 £



CAMEL



IVORY



GREY

* Same yarn pants FW24-622
Same yarn skirt FW24-602

* Buttons will be cancelled in production

PULLOVERS

FW24-056

SIZES: 1-2-3-4-5
COMPOSITION: 50% AC
45% PA 5% WOOL
PRICE: 34,00 £



* Same yarn pants FW24-622



BEIGE
(BLACK STITCH)



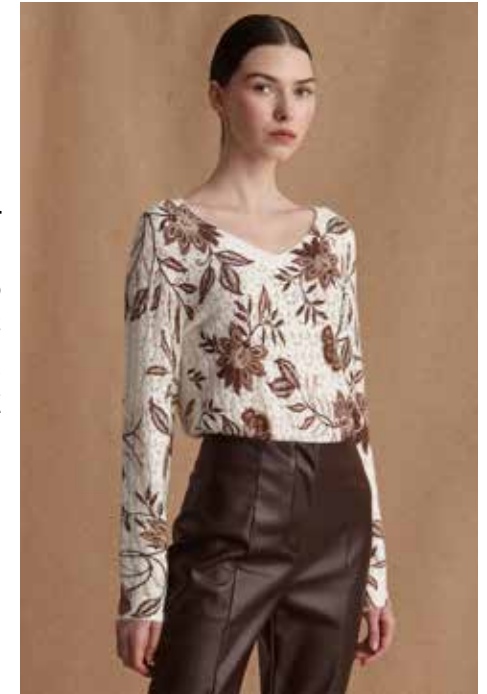
EMERALD
(GREY STITCH)



ORANGE
(CAMEL STITCH)

FW24-057

SIZES: 1-2-3-4-5
COMPOSITION: 80% AC
15% PA 5% ELASTANE
PRICE: 36,00 £



BROWN



MAGENTA

PULLOVERS

FW24-058

SIZES: 1-2-3-4-5
COMPOSITION:
58% VISCOSE 42% PA
PRICE: 34,00 £



LIGHT BLUE



MAGENTA



YELLOW

FW24-059

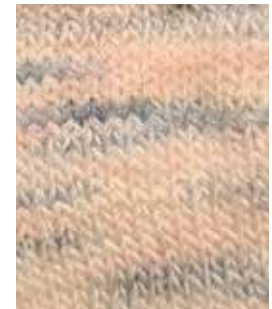
SIZES: 1-2-3-4-5
COMPOSITION: 43% AC
29% PL
28% PBT
PRICE: 31,00 £



PINK



LIGHT BLUE



IVORY

PULLOVERS

FW24-060

SIZES: 1-2-3-4-5
COMPOSITION:
80% VISCOSE 20% PA
FABRIC: VISCOSE/
RAYON
PRICE: 36,00 £



EMERALD



BEIGE



BLACK



BROWN * Beige will be like same as our photoshop

FW24-061

SIZES: 1-2-3-4-5
COMPOSITION:
58% VISCOSE
42% PA
PRICE: 33,00 £



BEIGE
(BROWN STRIPES)



LIGHT BLUE
(CAMEL STRIPES)



BLACK
(IVORY STRIPES)

PULLOVERS

FW24-062

SIZES: 1-2-3-4-5
COMPOSITION:
80% VISCOSE 20% PA
FABRIC: CHIFFON
PRICE: 31,00 £



BEIGE



BLACK

FW24-063

SIZES: 1-2-3-4-5
COMPOSITION:
80% VISCOSE 20% PA
PRICE: 30,00 £



**CAMEL
(IVORY BLACK
COLLAR)**



**GREEN
(BEIGE IVORY
COLLAR)**



**BLACK
(IVORY CAMEL
COLLAR)**

PULLOVERS

FW24-064

SIZES: 1-2-3-4-5-6

COMPOSITION:

80% VISCOSE

20% PL

PRICE: 31,00 £



**GREEN
(BEIGE STRIPE)**



**LIGHT BLUE
(BROWN STRIPE)**



**BLACK
(IVORY STRIPE)**

FW24-065

SIZES: 1-2-3-4-5

COMPOSITION:

80% VISCOSE 20% PL

PRICE: 32,00 £



* Same yarn pants FW24-625



LIGHT BLUE



BEIGE



GREY



BLACK

PULLOVERS



FW24-067

SIZES: 1-2-3-4-5-6

COMPOSITION: 80% VISCOSE 20% PA

PRICE: 32,00 £



**IVORY
(BLACK EMB.)**



**CAMEL
(ORANGE EMB.)**



**EMERALD
(BLACK EMB.)**



**BLACK
(CAMEL EMB.)**

PULLOVERS

FW24-068

SIZES: 1-2-3-4-5
COMPOSITION:
80% VISCOSE 20% PA
PRICE: 34,00 £



IVORY



MAGENTA



BLACK



BEIGE

* Lace will be improved for bulk

FW24-069

SIZES: 1-2-3-4-5
COMPOSITION: 45% PA
38% AC
11% WOOL
6% MOHAIR
PRICE: 39,00 £



BROWN



MAGENTA

PULLOVERS

FW24-070

SIZES: 1-2-3-4-5
COMPOSITION:
55% PL 18% AC
17% PA 10% WOOL
PRICE: 33,00 £



LIGHT BLUE



BEIGE



IVORY

FW24-071

SIZES: 1-2-3-4-5
COMPOSITION:
58% VISCOSE 42% PA
PRICE: 34,00 £



BEIGE
(MAGENTA TIE-DYE)



BLACK
(IVORY TIE-DYE)



CAMEL
(IVORY TIE-DYE)

PULLOVERS

FW24-072

SIZES: 1-2-3-4-5
COMPOSITION:
80% VISCOSE
20% PA

PRICE: 34,00 £



MAGENTA



BLUE

FW24-073

SIZES: 1-2-3-4-5-6
COMPOSITION:
50% AC
45% PA
5% WOOL

PRICE: 30,00 £



* Same yarn pants FW24-622



ORANGE



IVORY



EMERALD



BROWN



BLACK

PULLOVERS

FW24-074

SIZES: 1-2-3-4-5

COMPOSITION:

100% RAYON

PRICE: 34,00 £



BROWN



MAGENTA



BLACK

* Same yarn skirt FW24-604



PULLOVERS

FW24-100

SIZES: 1-2-3-4-5
COMPOSITION:
58% VISCOSE
42% PA

PRICE: 34,00 £



**IVORY
(BLACK STRIPES)**



**CAMEL
(PINK STRIPES)**

FW24-101

SIZES: 1-2-3-4-5
COMPOSITION:
58% VISCOSE
42% PA

PRICE: 29,00 £



YELLOW



IVORY



BLACK



LIGHT BLUE

PULLOVERS

FW24-102

SIZES: 1-2-3-4-5
COMPOSITION:
58% VISCOSE
42% PA

PRICE: 28,00 £



* Cardigan set FW24-308



IVORY
(ORANGE PATTERN)



BLACK
(EMERALD PATTERN)

FW24-103

SIZES: 1-2-3-4-5
COMPOSITION:
80% VISCOSE
20% PA

PRICE: 29,00 £



LIGHT BLUE
(BROWN STRIPE)



MAGENTA
(BEIGE STRIPE)



BLACK
(EMERALD STRIPE)

PULLOVERS

FW24-104

SIZES: 1-2-3-4-5
COMPOSITION:
50% AC
45% PA
5% WOOL

PRICE: 24,00 £



EMERALD



BLACK



BEIGE

FW24-105

SIZES: 1-2-3-4-5
COMPOSITION:
38% PA
30% CASHMERE
27% VISCOSE
5% WOOL
PRICE: 41,00 £



* Same yarn pants FW24-623



**CAMEL
(BROWN STRIPE)**



**LIGHT BLUE
(CAMEL STRIPE)**



**GREY
(IVORY STRIPE)**



**IVORY
(BEIGE STRIPE)**



**ORANGE
(BEIGE STRIPE)**



**BLACK
(IVORY STRIPE)**

PULLOVERS

FW24-106

SIZES: 1-2-3-4-5
COMPOSITION:
48% VISCOSE
27% PL
25% PA

PRICE: 30,00 £



* Same yarn skirt FW24-600



BROWN



GREEN



IVORY



YELLOW

FW24-107

SIZES: 1-2-3-4-5
COMPOSITION: 68%AC
28% PL
4% ELASTANE

PRICE: 34,00 £



PINK



GREEN

* Lurex will be added on the front panel as well

PULLOVERS

FW24-108

SIZES: 1-2-3-4-5
COMPOSITION: 80% AC
15% PA
5% ELASTANE
PRICE: 34,00 £



BEIGE



MAGENTA

FW24-109

SIZES: 1-2-3-4-5
COMPOSITION: 80%
VISCOSE 20% PA
PRICE: 31,00 £



**BROWN
(SILVER FOIL)**



**BEIGE
(SILVER FOIL)**



**MAGENTA
(COPPER FOIL)**



**BLACK
(SILVER FOIL)**

PULLOVERS

FW24-110

SIZES: 1-2-3-4-5
COMPOSITION: 50% AC
45% PA
5% WOOL

PRICE: 37,00 £



GREY
(LIGHT BLUE FABRIC)



IVORY



BLACK

(BLACK FABRIC) (IVORY FABRIC)

FW24-111

SIZES: 1-2-3-4-5-6
COMPOSITION:
80% VISCOSE
20% PA

PRICE: 30,00 £



BLACK



EMERALD



MAGENTA



IVORY

PULLOVERS

FW24-113

SIZES: 1-2-3-4-5
COMPOSITION: 68% AC
28% PL
4% EA

PRICE: 33,00 £



PURPLE



YELLOW

FW24-114

SIZES: 1-2-3-4-5
COMPOSITION: 72% AC
25% PA
3% EA

PRICE: 34,00 £



BROWN



MAGENTA

PULLOVERS

FW24-150

SIZES: 1-2-3-4-5
COMPOSITION:
48% VISCOSE
27% PL
25% PA

PRICE: 31,00 £



BLACK

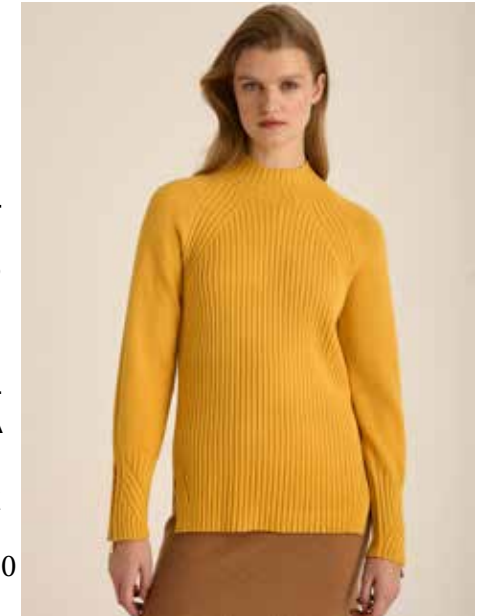


YELLOW

FW24-151

SIZES: 1-2-3-4-5
COMPOSITION:
48% VISCOSE
27% PL
25% PA

PRICE: 33,00 £



* Same yarn pants FW24-620
Same yarn skirt Fw24-600



YELLOW



LIGHT BLUE



GREEN



IVORY



PINK

PULLOVERS

FW24-152

SIZES: 1-2-3-4-5
COMPOSITION: 50% AC
45% PA
5% WOOL

PRICE: 33,00 £

* Same yarn pants FW24-622
Same yarn skirt FW24-602



GREY



IVORY



BEIGE



EMERALD



BLACK

FW24-153

SIZES: 1-2-3-4-5
COMPOSITION: 50% AC
45% PA
5% WOOL

PRICE: 31,00 £

* Same yarn pants FW24-622



BROWN
(NAVY STRIPES)



IVORY
(BEIGE STRIPES)



EMERALD
(BLACK STRIPES)

PULLOVERS



FW24-190

SIZES: 1-2-3-4-5

COMPOSITION: 50% AC 45% PA

5% WOOL

PRICE: 34,00 £



GREY



EMERALD



IVORY



BLACK



ORANGE

* Same yarn pants FW24-622

SLEEVELESS PULLOVER



FW24-200

SIZES: 1-2-3-4-5-6

COMPOSITION: 58% VISCOSE 42% PA

PRICE: 19,00 £



CAMEL



IVORY



BEIGE



EMERALD



LIGHT BLUE



BLACK



GREY

VEST PULLOVER



FW24-201

SIZES: 1-2-3-4-5

COMPOSITION: 50% AC 45% PA

5% WOOL

PRICE: 34,00 £



BROWN



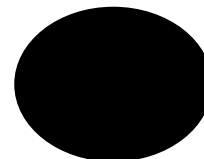
GREY



BEIGE



EMERALD



BLACK

PONCHOS

FW24-202

SIZES: 1-2-3
COMPOSITION: 55% AC
30% PL
15% WOOL

PRICE: 34,00 £



BROWN

FW24-203

SIZES: 1-2-3
COMPOSITION: 50% AC
45% PA
5% WOOL

PRICE: 31,00 £



* Same yarn pants FW24-622



CAMEL
(BLACK STRIPE)



GREY
(BROWN STRIPE)



IVORY
(BEIGE STRIPE)

* Sample's length is a bit short.
Length will be increased 6cm.

TWINSETS



FW24-250

SIZES: 1-2-3-4-5

COMPOSITION: 80% VISCOSE 20% PA

PRICE: 34,00 £



GREEN



BLACK



BEIGE



FW24-251

SIZES: 1-2-3-4-5

COMPOSITION: 80% VISCOSE 20% PA

PRICE: 30,00 £



GREEN



BLACK



BEIGE

TWINSETS



FW24-252

SIZES: 1-2-3-4-5

COMPOSITION: 80% VISCOSE 20% PA

PRICE: 34,00 £



BLACK
(IVORY EMB.)



IVORY
(BLACK EMB.)



LIGHT BLUE
(GREY EMB.)



FW24-253

SIZES: 1-2-3-4-5

COMPOSITION: 80% VISCOSE 20% PA

PRICE: 29,00 £



BLACK
(IVORY STRIPES)



IVORY
(BLACK STRIPES)



LIGHT BLUE
(GREY STRIPES)

TWINSETS



FW24-254

SIZES: 1-2-3-4-5-6
COMPOSITION: 80% VISCOSE 20% PA
PRICE: 33,00 £



LIGHT BLUE



BLACK



FW24-255

SIZES: 1-2-3-4-5-6
COMPOSITION: 80% VISCOSE 20% PA
PRICE: 25,00 £



LIGHT BLUE



BLACK

* Beige stripe will be Ivory

SCARVES &

BEANIES

FW24-280

SIZES: T/U
COMPOSITION:
48% VISCOSE
27% PL
25% PA

PRICE: 16,00 £



FW24-281

SIZES: T/U
COMPOSITION:
48% VISCOSE
27% PL
25% PA

PRICE: 19,00 £



GREEN



IVORY



BEIGE



BROWN



LIGHT BLUE



ORANGE



PINK



YELLOW



GREEN



IVORY



BEIGE



BROWN



LIGHT BLUE



ORANGE



PINK



YELLOW

SCARVES &

BEANIES



FW24-282

SIZES: T/U

COMPOSITION: 65% RAYON 35% PL

PRICE: 23,00 £



BROWN



EMERALD



BEIGE



BLACK

CARDIGANS



FW24-300

SIZES: 1-2-3-4-5

COMPOSITION: 55% PL18% ACL 17% NY 10% WOOL

PRICE: 39,00 £



PINK
(TOP PART BEIGE)



LIGHT BLUE
(TOP PART IVORY)



FW24-301

SIZES: 1-2-3-4-5

COMPOSITION: 46% RECYCLED PL 27% PL
14% WOOL 11% AC 2% EA

PRICE: 34,00 £



GREEN



BROWN



IVORY

CARDIGANS



FW24-302

SIZES: 1-2-3-4-5
COMPOSITION: 51% VISCOSE 29% PL 20% PA
PRICE: 38,00 £



PINK



BEIGE



FW24-303

SIZES: 1-2-3-4-5
COMPOSITION:
80% VISCOSE 20% PA
& FABRIC: 58% VISCOSE
42% RAYON
PRICE: 34,00 £



BROWN



BLACK



BEIGE



EMERALD

* Beige will be like same as our photoshop

CARDIGANS

FW24-305

SIZES: 1-2-3-4-5
 COMPOSITION:
 38% PA
 30% CASHMERE
 27% VISCOSE
 5% WOOL

PRICE: 44,00 £

* Same yarn pants FW24-623



FW24-306

SIZES: 1-2-3-4-5-6
 COMPOSITION:
 48% VISCOSE
 27% PL
 25% PA

PRICE: 29,00 £

* Same yarn pants FW24-620



**CAMEL
(BROWN)**



**ORANGE
(BEIGE)**



**GREY
(IVORY)**



**LIGHT BLUE
(CAMEL)**



GREEN



IVORY



BEIGE



BLACK



**IVORY
(BEIGE)**



**BLACK
(IVORY)**



LIGHT BLUE



YELLOW



PINK



BROWN

CARDIGANS



FW24-307

SIZES: 1-2-3-4-5

COMPOSITION: 68% AC 28% PL 4% ELASTANE

PRICE: 41,00 £



BEIGE



GREY



BLACK



FW24-308

* Pullover set FW24-122

SIZES: 1-2-3-4-5

COMPOSITION: 64% PA 23% PL 13% VISCOSE

PRICE: 47,00 £



**IVORY
(ORANGE)**



**BLACK
(EMERALD)**

* In production the zipper will be double

CARDIGANS



FW24-309

SIZES: 1-2-3-4-5

**COMPOSITION: 48% VISCOSE 27% PL
25% PA**

PRICE: 38,00 £



**GREEN
(BEIGE LACE UP)**



**LIGHT BLUE
(GREY LACE UP)**



**BLACK
(BLACK LACE UP)**



**IVORY
(BEIGE LACE UP)**

DRESSES



FW24-350

SIZES: 1-2-3-4-5
COMPOSITION: 80% VISCOSE 20% PA &
FABRIC: 70% VISCOSE 30% PL
PRICE: 34,00 £



BLACK



SILVER



FW24-351

SIZES: 1-2-3-4-5
COMPOSITION: 80% VISCOSE 20% PA
& FABRIC: 100% PL
PRICE: 34,00 £



BLACK



MAGENTA

COATIGANS



FW24-400

SIZES: 1-2-3-4-5-6

COMPOSITION: 64% PA 23% PL 13% VISCOSE

PRICE: 44,00 £



BROWN



IVORY



FW24-401

SIZES: 1-2-3-4-5

COMPOSITION: 70% AC 24% PL

4% ELASTANE 2% WOOL

PRICE: 44,00 £



CAMEL

* Pockets will be cancelled in production

COATIGANS



FW24-402

SIZES: 1-2-3-4-5
COMPOSITION: 50% AC 45% PA 5% WOOL
PRICE: 43,00 £



BEIGE



CAMEL



FW24-403

SIZES: 1-2-3-4-5-6
COMPOSITION: 58% VISCOSE 42% PA
PRICE: 44,00 £



BLACK
(PATTERN BEIGE)



BROWN
(PATTERN L.BLUE)



GREEN
(PATTERN BEIGE)

COATIGANS



FW24-404

SIZES: 1-2-3-4-5

COMPOSITION: 42% AC 28% PL 30% PBT

PRICE: 40,00 £



**IVORY
(BLACK)**



**MAGENTA
(BEIGE)**

COATS



FW24-450

SIZES: 1-2-3-4-5

COMPOSITION: 64% PA 23% PL 13% VISCOSE

PRICE: 53,00 £



BLACK



IVORY



FW24-451

SIZES: 1-2-3-4-5

COMPOSITION: 74% AC 16% PL 10% NY

PRICE: 47,00 £



IVORY



BEIGE

COATS



FW24-452

SIZES: 1-2-3-4-5
COMPOSITION: 58% VISCOSE 42% PA
PRICE: 43,00 £



ORANGE
(EMB: CAMEL)



GREY
(EMB. L.BLUE)



BLACK
(EMB. CAMEL)



FW24-453

SIZES: 1-2-3-4-5
COMPOSITION: 64% PA 23% PL 13% VISCOSE
PRICE: 51,00 £



LIGHT BLUE



CAMEL

COATS



FW24-454

SIZES: 1-2-3-4-5

COMPOSITION: 64% PA 23% PL 13% VISCOSE

PRICE: 51,00 £



IVORY

(CAMEL & BLACK PATTERN)



CAMEL

(BROWN & IVORY PATTERN)



FW24-455

SIZES: 1-2-3-4-5

COMPOSITION: 58% VISCOSE 42% PA

PRICE: 54,00 £



BLACK

(BLUE & BEIGE)



GREY

(LIGHT BLUE & IVORY)

COATS



FW24-456

SIZES: 1-2-3-4-5

COMPOSITION: 58% VISCOSE 42% PA

PRICE: 63,00 £



GREY



BEIGE



BLACK

* Buttons will be changed.
In production the coat will be single breasted.



FW24-457

SIZES: 1-2-3-4-5

COMPOSITION: 100% AC

PRICE: 44,00 £



IVORY



CAMEL

COATS

FW24-458

SIZES: 1-2-3-4-5
COMPOSITION:
58% VISCOSE
42% PA

PRICE: 47,00 £



BROWN



BLACK

* Sleeve length will be longer in production.

FW24-459

SIZES: 1-2-3-4-5
COMPOSITION:
58% VISCOSE
42% PA

PRICE: 57,00 £



IVORY



GREY



CAMEL



BLACK

* The sample is size 0.
Production will be in the correct measurements.
Fur will be longer to cover the collar.

COATS



FW24-460

SIZES: 1-2-3-4-5
COMPOSITION: 58% VISCOSE 42% PA
PRICE: 47,00 £



**IVORY
(PATTERN BEIGE)**



**BLACK
(PATTERN CAMEL)**



FW24-461

SIZES: 1-2-3-4-5
COMPOSITION: 50% PL 50% AC
PRICE: 54,00 £

* Buttons will be NAVY for the production for the SMS color.



RED



BROWN



GREY

COATS



FW24-462

SIZES: 1-2-3-4-5

COMPOSITION: 58% VISCOSE 42% PA

PRICE: 44,00 £



BLACK
(PATTERN BEIGE)



CAMEL
(PATTERN IVORY)

* Buttons will be improved.

Neck measurments will be improved, SMS neck opening is big.



FW24-463

SIZES: 1-2-3-4-5

COMPOSITION: 38% RECYCLED PL 30% AC 20% PL
10% WOOL 2% EA

PRICE: 54,00 £



GREY
(STRIPE IVORY)



BLACK
(CAMEL STRIPE)

COATS



FW24-464

SIZES: 1-2-3-4-5

COMPOSITION: 70% AC 27% PL

3% EA

PRICE: 44,00 £



BROWN
(CAMEL & LIGHT BLUE)



IVORY
(BLACK & CAMEL)

JACKETS



FW24-500

SIZES: 1-2-3-4-5
COMPOSITION: 58% VISCOSE 42% PA
PRICE: 51,00 £



CAMEL

(CHEVRON BEIGE) (CHEVRON BEIGE) (CHEVRON CAMEL)



IVORY



BLACK



FW24-501

SIZES: 1-2-3-4-5
COMPOSITION: 55% AC 30% PL 15% WOOL
PRICE: 44,00 £



BEIGE
(IVORY)



GREY
(IVORY)

JACKETS

FW24-502

SIZES: 1-2-3-4-5
COMPOSITION:
58% VISCOSE
42% PA

PRICE: 41,00 £

* Matching pants FW24-621



BEIGE



BLACK



MAGENTA

FW24-503

SIZES: 1-2-3-4-5
COMPOSITION:
58% VISCOSE
42% PA

PRICE: 44,00 £

* Matching pants FW24-624
Same yarn skirt FW24-603



EMERALD



BLACK



CAMEL



IVORY

JACKETS



FW24-504

* Same yarn pants FW24-624

SIZES: 1-2-3-4-5

COMPOSITION: 58% VISCOSE 42% PA

PRICE: 44,00 £



**CAMEL
(STRIPE COPPER)**



**BLACK
(STRIPE CAMEL)**



FW24-505

* Same yarn skirt FW24-603

SIZES: 1-2-3-4-5

COMPOSITION: 58% VISCOSE 42% PA

PRICE: 41,00 £



**BLACK
(IVORY)**



**BEIGE
(IVORY)**

SLEEVELESS

JACKET



FW24-507

SIZES: 1-2-3-4-5

COMPOSITION: 58% VISCOSE 42% PA

PRICE: 37,00 £

* Hook will be canceled in production



BROWN



BLACK



IVORY

CAPES



FW24-550

SIZES: 1-2-3-4-5-6

COMPOSITION: 58% VISCOSE 42% PA

PRICE: 41,00 £

* In production the zipper will be double



BEIGE



IVORY



BLACK



BROWN

SKIRTS

FW24-600

SIZES: 1-2-3-4-5
COMPOSITION:
48% VISCOSE
27% PL
25% PA

PRICE: 31,00 £



GREEN



IVORY



YELLOW



BROWN

FW24-601

SIZES: 1-2-3-4-5
COMPOSITION:
80% VISCOSE
20% PA

PRICE: 33,00 £



GREEN



GREY



BEIGE



BROWN



CAMEL



EMERALD



MAGENTA



BLACK

SKIRTS

FW24-602

SIZES: 1-2-3-4-5
COMPOSITION: 50% AC
45% PA
5% WOOL

PRICE: 31,00 £



CAMEL



BLACK



BEIGE



GREY



EMERALD



IVORY

FW24-603

SIZES: 1-2-3-4-5
COMPOSITION:
58% VISCOSE
42% PA

PRICE: 29,00 £



BLACK



EMERALD



BEIGE

SKIRTS



FW24-604

SIZES: 1-2-3-4-5

COMPOSITION: 100% RAYON

PRICE: 34,00 £



BROWN



MAGENTA



BLACK

PANTS

FW24-620

SIZES: 1-2-3-4-5
COMPOSITION:
48% VISCOSE
27% PL
25% PA

PRICE: 33,00 £



BEIGE



LIGHT BLUE



BROWN



PINK



GREEN



YELLOW



IVORY



BEIGE



BLACK



MAGENTA

FW24-621

SIZES: 1-2-3-4-5
COMPOSITION:
58% VISCOSE
42% PA

PRICE: 38,00 £



PANTS

FW24-622

SIZES: 1-2-3-4-5
 COMPOSITION:
 50% ACRYLIC
 45% PA
 5% WOOL

PRICE: 34,00 £



GREY



BLACK



CAMEL



IVORY



EMERALD



BROWN



BEIGE



**CAMEL
(BROWN STRIPE)**



**BLACK
(IVORY STRIPE)**



**LIGHT BLUE
(CAMEL STRIPE)**



**IVORY
(BEIGE STRIPE)**



**GREY
(IVORY STRIPE)**

FW24-623

SIZES: 1-2-3-4-5
 COMPOSITION:
 38% PA
 30% CASHMERE
 27% VISCOSE
 5% WOOL

PRICE: 44,00 £



PANTS

FW24-624

SIZES: 1-2-3-4-5
COMPOSITION:
58% VISCOSE
42% PA

PRICE: 31,00 £



CAMEL



BLACK



GREY



MAGENTA



IVORY



GREEN



GREY



BEIGE



ORANGE



BLACK



LIGHT BLUE

FW24-625

SIZES: 1-2-3-4-5
COMPOSITION:
80% VISCOSE
20% PA

PRICE: 34,00 £





TOPS

FW24-700

SIZES: 1-2-3-4-5
COMPOSITION:
100% VISCOSE

PRICE: 33,00 £



BEIGE



BROWN



IVORY



BLACK

FW24-701

SIZES: 1-2-3-4-5
COMPOSITION:
100% COTTON

PRICE: 34,00 £



GREEN



BLUE

TOPS



FW24-702

SIZES: 1-2-3-4-5

COMPOSITION: 59% PL 30% PD 11% EA

PRICE: 32,00 £



MAGENTA



BEIGE



BLACK



FW24-703

SIZES: 1-2-3-4-5

COMPOSITION: 59% PL 30% PD 11% EA

PRICE: 27,00 £



MAGENTA



BEIGE



BLACK

TOPS



FW24-704

SIZES: 1-2-3-4-5

COMPOSITION: 70% VISCOSE 30% PL

PRICE: 43,00 £



GREEN



BLACK



MAGENTA



FW24-705

SIZES: 1-2-3-4-5

COMPOSITION: 65% COTTON 32% PD 3% EA

PRICE: 41,00 £



**WHITE
(BLACK EMB.)**



**BLACK
(IVORY EMB.)**



**LIGHT BLUE
(BLACK EMB.)**

DRESSES



FW24-720

SIZES: 1-2-3-4-5
COMPOSITION: 100% PU
PRICE: 54,00 £



NAVY



BLACK



GREEN



FW24-721

SIZES: 1-2-3-4-5
COMPOSITION: 100% VISCOSE
PRICE: 34,00 £



BROWN

DRESSES

FW24-722

SIZES: 1-2-3-4-5

COMPOSITION:

60% COTTON

37% PL

3%EA

PRICE: 31,00 £



CAMEL



BLACK



BROWN



EMERALD



GREY



SKIRTS

FW24-740

SIZES: 1-2-3-4-5
COMPOSITION:
100% PL

PRICE: 34,00 £



GOLD



BLACK



MAGENTA



SILVER

FW24-741

SIZES: 1-2-3-4-5
COMPOSITION:
100% PU

PRICE: 38,00 £



BROWN



BLACK



GREEN

PANTS

FW24-760

SIZES: 1-2-3-4-5
COMPOSITION:
95% PL
5% EA

PRICE: 41,00 £



BLACK



MAGENTA



BEIGE



BROWN

FW24-761

SIZES: 1-2-3-4-5
COMPOSITION:
80% PL
20% VISCOSE

PRICE: 44,00 £



IVORY



BLACK



CAMEL



BROWN

PANTS

FW24-762

SIZES: 1-2-3-4-5
COMPOSITION:
95% PL
5% EA

PRICE: 38,00 £



BEIGE



MAGENTA



NAVY

FW24-763

SIZES: 1-2-3-4-5
COMPOSITION:
100% PU

PRICE: 41,00 £



DARK BROWN



BLACK



GREEN



BROWN

PANTS



FW24-764

SIZES: 1-2-3-4-5

COMPOSITION: 70% PL 27% VISCOSE
3% EA

PRICE: 37,00 £



BEIGE



BLACK



CAMEL

JUMPSUIT



FW24-780

SIZES: 1-2-3-4-5

COMPOSITION: 95% PL 5% EA

PRICE: 51,00 £



MAGENTA



BLACK



NAVY

JACKETS



FW24-790

SIZES: 1-2-3-4-5
COMPOSITION: 100% PU
PRICE: 60,00 £



BROWN



BLACK



GREEN

* Shape and measurements will be improved for bulk



FW24-791

* Matching pants FW24-762

SIZES: 1-2-3-4-5
COMPOSITION: 95% PL 5% EA
PRICE: 54,00 £



BEIGE



NAVY



MAGENTA

JACKETS



FW24-792

SIZES: 1-2-3-4-5

COMPOSITION: 59% PL 30% PA
11% EA

PRICE: 38,00 £



BEIGE



MAGENTA



BLACK



JACKETS
COLLECTION

JACKETS



FW24-800

SIZES: 1-2-3-4-5
COMPOSITION: 100% PL
PRICE: 64,00 £



BEIGE



BLACK



FW24-801

SIZES: 1-2-3-4-5
COMPOSITION: 100% PL
PRICE: 54,00 £



BEIGE



BLACK

* Bottom strings will be cancelled in production.
Bottom will be wider.

JACKETS



FW24-802

SIZES: 1-2-3-4-5
COMPOSITION: 100% PL
PRICE: 84,00 £



IVORY



BLACK

* Sample is small.
Production will be in the correct measurements.



FW24-803

SIZES: 1-2-3-4-5
COMPOSITION: 100% PL
PRICE: 54,00 £

**Double face.*



BEIGE



BLACK

* Sample is small.
Production will be in the correct measurements.

JACKETS



**Double face.*

FW24-804

SIZES: 1-2-3-4-5

COMPOSITION: 100% PL

PRICE: 77,00 £



BLACK



BEIGE

** Sample is small.*

Production will be in the correct measurements.



TSHIRTS
COLLECTION

TSHIRTS

FW24-900

SIZES: 1-2-3-4-5
COMPOSITION:
95% VISCOSE
5% EA

PRICE: 27,00 £



IVORY



BEIGE



BLACK



MAGENTA

FW24-901

SIZES: 1-2-3-4-5
COMPOSITION:
95% VISCOSE
5% EA

PRICE: 23,00 £



IVORY
(BLACK STRIPE)



BLACK
(CAMEL STRIPE)



GREY
(BLACK STRIPE)

TSHIRTS

FW24-902

SIZES: 1-2-3-4-5
COMPOSITION:
95% VISCOSE
5% EA

PRICE: 25,00 £



BEIGE



IVORY



BLACK

FW24-903

SIZES: 1-2-3-4-5
COMPOSITION:
95% VISCOSE
5% EA

PRICE: 23,00 £



CAMEL



IVORY



BLACK

TSHIRTS

FW24-904

SIZES: 1-2-3-4-5
COMPOSITION:
60% COTTON
37% PI
3% EA

PRICE: 24,00 £



GREY



BEIGE



BLACK



IVORY

FW24-905

SIZES: 1-2-3-4-5
COMPOSITION:
95% VISCOSE
5% EA

PRICE: 23,00 £



MULTI

TSHIRTS



FW24-906

SIZES: 1-2-3-4-5

COMPOSITION: 95% VISCOSE 5% EA

PRICE: 23,00 £



BLACK



FW24-

SIZES: 1-2-3-4-5

COMPOSITION: 95% VISCOSE 5% EA

PRICE: 27,00 £



BEIGE



BROWN

TSHIRTS

FW24-908

SIZES: 1-2-3-4-5
COMPOSITION:
65% RAYON
27% PL
2% EA
PRICE: 29,00 £



BEIGE



IVORY



BLACK



BROWN

FW24-909

SIZES: 1-2-3-4-5
COMPOSITION:
95% VISCOSE
5% EA
PRICE: 25,00 £



MAGENTA



BLACK



EMERALD



BEIGE



Paris showroom:

21 Rue Du Caire, 75002, Paris, France T: +33 (1) 423 312 06,
WhatsApp1: +33 761 685 459 WhatsApp2: +33 650 048 948

Athens showroom:

180 Kifisias Avenue, 15231, Chalandri, Athens, Greece T: +30 210 67 22 270

info@marina-v.com • www.marina-v.com • b2b.marina-v.com • [@marinavparis](https://www.instagram.com/marinavparis)