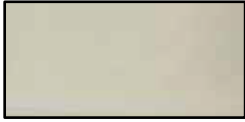




MARINA V
PARIS

Fall - Winter

2025



IVORY



BLACK



GREY



TEAL



MERLOT



BROWN



SKY BLUE



CAMEL



INDIGO



BASICS FW25-001

COMPOSITION: 80% VISCOSE
20% PA

PRICE: 20 £

SIZES: 1-2-3-4-5-6



IVORY



BLACK



GREY



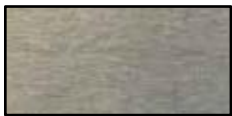
SKY BLUE



RED



KHAKI



BEIGE



CAMEL



TEAL

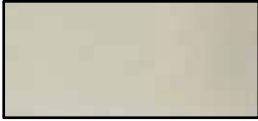


BASICS FW25-002

COMPOSITION: 80% VISCOSE
20% PA

PRICE: 20 £

SIZES: 1-2-3-4-5-6



IVORY



BLACK



GREY



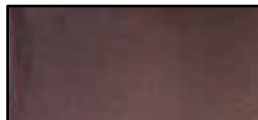
NAVY



SKY BLUE



RED



BROWN



KHAKI



CAMEL

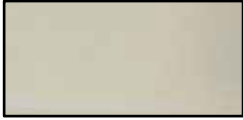


BASICS FW25-003

COMPOSITION: 80% VISCOSE
20% PA

PRICE: 20 £

SIZES: 1-2-3-4-5-6



IVORY



BLACK



GREY



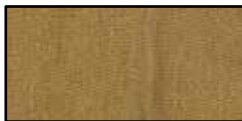
MERLOT



INDIGO



SKY BLUE



CAMEL



TAUPE



NAVY

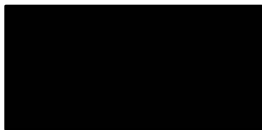


BASICS FW25-004

COMPOSITION: 80% VISCOSE
20% PA

PRICE: 20 £

SIZES: 1-2-3-4-5-6



BLACK



SKY BLUE



BEIGE

PULLOVERS FW25-005

COMPOSITION: 50% AC
45% PA
5% WOOL

PRICE: 35 £

SIZES: 1-2-3-4-5
*MATCHING PANTS FW25-620



BLACK (IVORY
STRIPES & LUREX
CAMEL)



GREY (IVORY
STRIPES & SILVER
LUREX)

PULLOVERS FW25-006

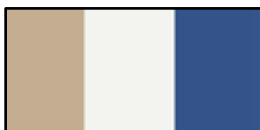
COMPOSITION: 50% AC
45% PA
5% WOOL

PRICE: 36 £

SIZES: 1-2-3-4-5
*MATCHING PANTS FW25-620



IVORY
(TAUPE/BEIGE)



LATTE
(IVORY/INDIGO)

PULLOVERS FW25-050

COMPOSITION: 59% POL
15% AC
10% PA
10% VISCOSE
6% WOOL

PRICE: 35 £

SIZES: 1-2-3-4-5



GREY
(DARK GREY)



CAMEL
(BROWN)

PULLOVERS FW25-051

COMPOSITION: 68% AC
28% POL
4% ELASTANE

PRICE: 36 £

SIZES: 1-2-3-4-5



NAVY
(CAMEL & PINK)



CAMEL
(BLACK & IVORY)



IVORY
(CAMEL & BLACK)

PULLOVERS FW25-052

COMPOSITION: 80% VISCOSE
20% PA
WITH LUREX V-NECK

PRICE: 30 £

SIZES: 1-2-3-4-5-6



SKY BLUE



MERLOT



BLACK



GREY



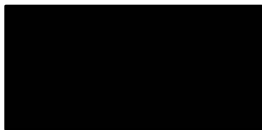
IVORY

PULLOVERS FW25-053

COMPOSITION: 80% VISCOSE
20% PA

PRICE: 32 £

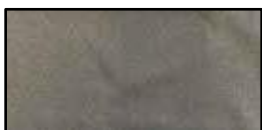
SIZES: 1-2-3-4-5



BLACK



SILVER



GOLD

PULLOVERS FW25-057

COMPOSITION: 60% POL
40% VISCOSE
WITH LUREX

PRICE: 34 £

SIZES: 1-2-3-4-5-6
***MATCHING PANTS FW25-624**



BLACK



GREY



INDIGO



IVORY

PULLOVERS FW25-059

COMPOSITION: 54% POL
20% AC
20% PA
6% WOOL

PRICE: 34 £

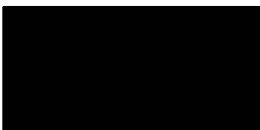
SIZES: 1-2-3-4-5



GREY



IVORY



BLACK

PULLOVERS FW25-062

COMPOSITION: 65% RAYON
35% PA

PRICE: 35 £

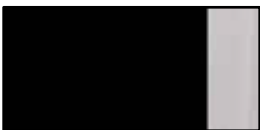
SIZES: 1-2-3-4-5-6



CAMEL (TEAL)



SKY BLUE (GREY)



BLACK (IVORY)

PULLOVERS FW25-065

COMPOSITION: 58% VISCOSE
42% PA

PRICE: 34 £

SIZES: 1-2-3-4-5



SKY BLUE
(TAUPE/IVORY)



RED
(MERLOT/GREY)

PULLOVERS FW25-068

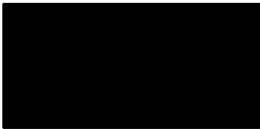
COMPOSITION: 50% POL
20% AC
20% PA
10% WOOL

PRICE: 36 £

SIZES: 1-2-3-4-5



GREY



BLACK



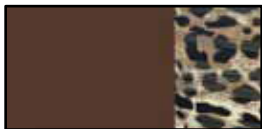
CAMEL

PULLOVERS FW25-069

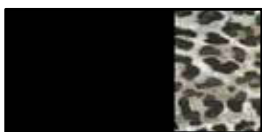
COMPOSITION: 65% AC
28% POL
5% ELASTANE

PRICE: 34 £

SIZES: 1-2-3-4-5



BROWN



BLACK

PULLOVERS FW25-071

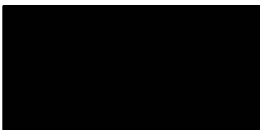
COMPOSITION: 60% POL
40% VISCOSE
WITH LUREX

PRICE: 35 £

SIZES: 1-2-3-4-5
***MATCHING PANTS FW25-624**



* Sequins color will be improved for production. Sequins will be removed from the back panel for production.



BLACK
(IVORY STRIPES)



IVORY
(TAUPE STRIPES)

PULLOVERS FW25-072

COMPOSITION: 100% PA

PRICE: 35 £

SIZES: 1-2-3-4



MERLOT



GREY



NAVY

PULLOVERS FW25-101

COMPOSITION: 68% AC
28% POL
4% ELASTANE

PRICE: 44 £

SIZES: 1-2-3-4-5

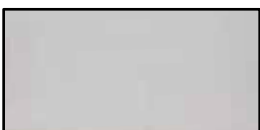
*Strass will be cancelled for production.



GREY



SKY BLUE



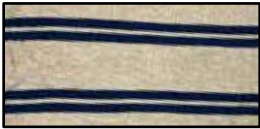
IVORY

PULLOVERS FW25-105

COMPOSITION: 58% VISCOSE
42% PA

PRICE: 36 £

SIZES: 1-2-3-4-5



CAMEL
(NAVY STRIPES)



BLACK
(IVORY STRIPES)



NAVY
(RED STRIPES)

PULLOVERS FW25-107

COMPOSITION: 50% AC
45% PA
5% WOOL

PRICE: 32 £

SIZES: 1-2-3-4-5
*MATCHING PANTS FW25-620



INDIGO
(BEIGE & BLACK)



LATTE
(IVORY & BLACK)

PULLOVERS FW25-111

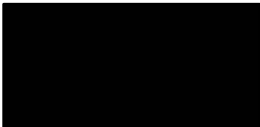
COMPOSITION: 50% AC
45% PA
5% WOOL

PRICE: 34 £

SIZES: 1-2-3-4-5-6
*MATCHING PANTS FW25-620



CAMEL



BLACK



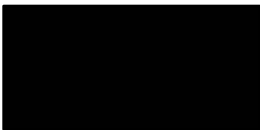
IVORY

PULLOVERS FW25-113

COMPOSITION: 80% VISCOSE
20% PA

PRICE: 34 £

SIZES: 1-2-3-4-5-6



BLACK



IVORY



MERLOT

PULLOVERS FW25-114

COMPOSITION: 58% VISCOSE
42% PA

PRICE: 32 £

SIZES: 1-2-3-4-5

MV 25



TEAL
(BROWN PRINT)



IVORY
(TAUPE PRINT)

PULLOVERS FW25-117

COMPOSITION: 60% POL
40% VISCOSE WITH LUREX

PRICE: 34 £

SIZES: 1-2-3-4-5-6



PULLOVERS FW25-119

COMPOSITION: 80% AC
15% PA
5% ELASTANE

PRICE: 36 £

SIZES: 1-2-3-4-5-6

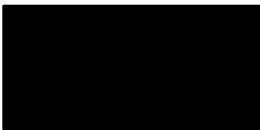


MULTI BROWN

MV 27



* Pearl size will be smaller
for production.



BLACK



IVORY



CAMEL

PULLOVERS FW25-120

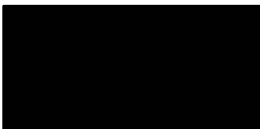
COMPOSITION: 58% VISCOSE
42% PA

PRICE: 36 £

SIZES: 1-2-3-4-5



TEAL



BLACK



TAUPE

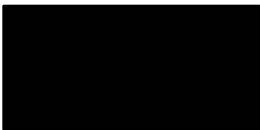
PULLOVERS FW25-121

COMPOSITION: 60% POL
40% VISCOSE
WITH LUREX

PRICE: 38 £

SIZES:1-2-3-4-5-6

* There will be 2 rows with pearls for production.



BLACK



MERLOT



IVORY

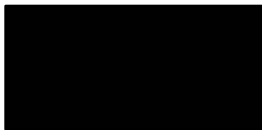
PULLOVERS FW25-122

COMPOSITION: 65% RAYON
35% PA

PRICE: 38 £

SIZES: 1-2-3-4-5

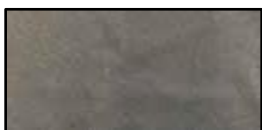
MV 30



BLACK



TEAL



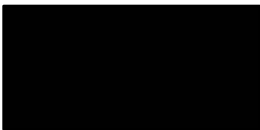
BEIGE

PULLOVERS FW25-123

COMPOSITION: 60% POL
40% VISCOSE
WITH LUREX

PRICE: 34 £

SIZES: 1-2-3-4-5-6



BLACK



RED



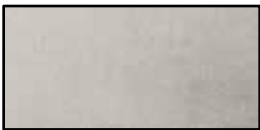
SILVER

PULLOVERS FW25-124

COMPOSITION: 60% POL
40% VISCOSE
WITH LUREX

PRICE: 32 £

SIZES: 1-2-3-4-5
*MATCHING PANTS FW25-624



IVORY



INDIGO



TAUPE

PULLOVERS FW25-150

COMPOSITION: 55% POL
18% AC
17% PA
10% WOOL

PRICE: 34 £

SIZES: 1-2-3-4-5



GREY



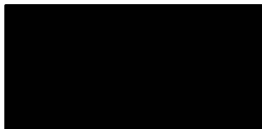
LATTE

PULLOVERS FW25-151

COMPOSITION: 80% VISCOSE
20% PA

PRICE: 32 £

SIZES: 1-2-3-4-5



BLACK



IVORY

PULLOVERS FW25-152

COMPOSITION: 80% VISCOSE
20% PA

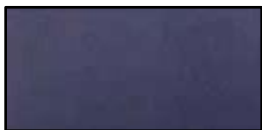
PRICE: 36 £

SIZES: 1-2-3-4-5

*MATCHING PANTS FW25-622



IVORY



NAVY

PULLOVERS FW25-154

COMPOSITION: 80% VISCOSE
20% PA
WITH LUREX

PRICE: 30 £

SIZES: 1-2-3-4-5



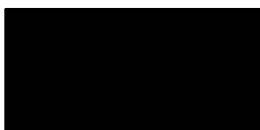
SHORTSLEEVE PULLOVERS FW25-200

COMPOSITION: 80% VISCOSE
20% PA

PRICE: 34 £



GREY



BLACK

SIZES: 1-2-3-4-5
***MATCHING SKIRT FW25-603**

MV 37



SKY BLUE
(TAUPE PRINT)



TOFFEE
(BROWN PRINT)

TWINSETS FW25-250

COMPOSITION: 60% POL
40% VISCOSE
WITH LUREX

PRICE: 35 £

SIZES: 1-2-3-4-5-6



SKY BLUE
(TAUPE PRINT)



TOFFEE
(BROWN PRINT)

TWINSETS FW25-251

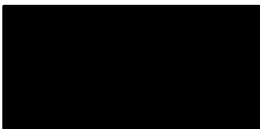
COMPOSITION: 60% POL
40% VISCOSE
WITH LUREX

PRICE: 30 £

SIZES: 1-2-3-4-5-6



TEAL



BLACK



GREY

TWINSETS FW25-254

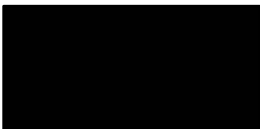
COMPOSITION: 80% VISCOSE
20% PA

PRICE: 36 £

SIZES: 1-2-3-4-5



TEAL



BLACK



GREY

TWINSETS FW25-255

COMPOSITION: 80% VISCOSE
20% PA

PRICE: 30 £

SIZES: 1-2-3-4-5



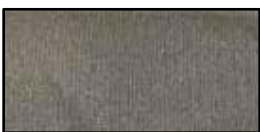
TEAL



BLACK



SILVER



GOLD

SLEEVELESS PULLOVERS FW25-261

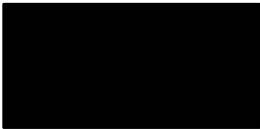
COMPOSITION: 60% POL
40% VISCOSE
WITH LUREX

PRICE: 25 £

SIZES: 1-2-3-4-5



GREY



BLACK



BEIGE

VEST PULLOVERS FW25-266

COMPOSITION: 43% AC
29% POL
28% PA

PRICE: 32 £

SIZES: 1-2-3-4-5

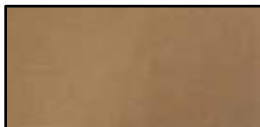


PONCHOS FW25-265

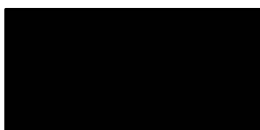
COMPOSITION: 58% VISCOSE
42% PA

PRICE: 42 £

SIZES: T/U



CAMEL



BLACK



BLACK



BEIGE



MERLOT



IVORY



GREY

CARDIGANS FW25-300

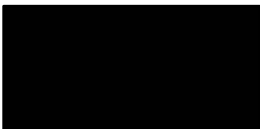
COMPOSITION: 54% POL
20% AC
20% PA
5% WOOL

PRICE: 34 £

SIZES: 1-2-3-4-5



IVORY



BLACK



TAUPE

CARDIGANS FW25-302

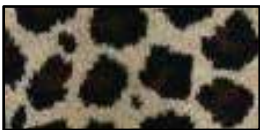
COMPOSITION: 50% AC
45% PA
5% ELASTANE

PRICE: 42 £

SIZES: 1-2-3-4-5



GREY



CAMEL

CARDIGANS FW25-303

COMPOSITION: 68% AC
28% POL
4% ELASTANE

PRICE: 40 £

SIZES: 1-2-3-4-5



GREY
(INDIGO/SKY BLUE/IVORY)



IVORY
(CAMEL/TOFFEE/BLACK)

CARDIGANS FW25-307

COMPOSITION: 58% VISCOSE
42% PA

PRICE: 42 £

SIZES: 1-2-3-4-5



CARDIGANS FW25-308

COMPOSITION: 43% AC
29% POL
28% PA

PRICE: 46 £

SIZES: 1-2-3-4-5



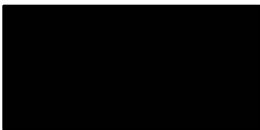
CAMEL



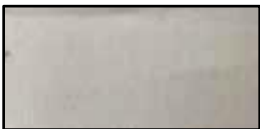
IVORY



* Strass will be cancelled at the back for production.



BLACK



IVORY



GREY

COATIGANS FW25-401

COMPOSITION: 68% AC
28% PA
4% ELASTANE

PRICE: 48 £

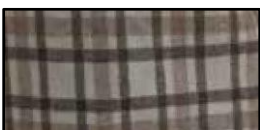
SIZES: 1-2-3-4-5



BLACK



BROWN



IVORY

COATIGANS FW25-404

COMPOSITION: 50% AC
45% PA
5% WOOL

PRICE: 46 £

SIZES: 1-2-3-4-5



* Button position will be improved for production.



INDIGO



TAUPE

COATS FW25-460

COMPOSITION: 47% AC
32% POL
13% WOOL
8% PA

PRICE: 58 £

SIZES: 1-2-3-4-5



SKIRTS FW25-603

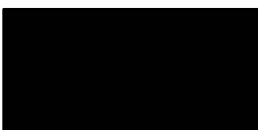
COMPOSITION: 80% VISCOSE
20% PA

PRICE: 38 £

SIZES: 1-2-3-4-5



GREY



BLACK


MARINA V
PARIS

Fall - Winter collection
FW25





SHIRTS FW25-706

COMPOSITION: 70% COTTON
30% POL

PRICE: 40 £

SIZES: 1-2-3-4-5



WHITE

MV 55



DRESSES FW25-720

COMPOSITION: 100% POL

PRICE: 44 £

SIZES: 1-2-3-4-5



KHAKI

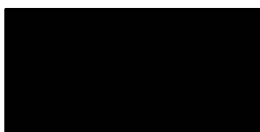


RED

*Pattern will be improved
for bulk



CAMEL



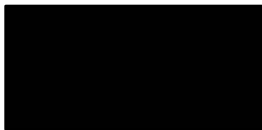
BLACK

DRESSES FW25-723

COMPOSITION: 88% POL
12% ELASTANE

PRICE: 55 £

SIZES: 1-2-3-4



BLACK



TAUPE



BROWN

SKIRTS FW25-741

COMPOSITION: 88% POL
12% ELASTANE

PRICE: 40 £

SIZES: 1-2-3-4-5



CAMEL



KHAKI



BEIGE

SKIRTS FW25-742

COMPOSITION: 88% POL
12% ELASTANE

PRICE: 42 £

SIZES: 1-2-3-4-5

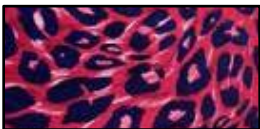


SKIRTS FW25-743

COMPOSITION: 100% POL

PRICE: 30 £

SIZES: 1-2-3-4-5



RED



KHAKI



TAUPE



MERLOT



BLACK



KHAKI



NAVY



BROWN



SKIRTS FW25-744

COMPOSITION: 96% POL
4% PA

PRICE: 28 £

SIZES: 1-2-3-4-5



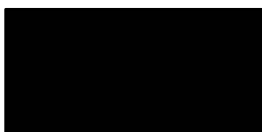
*Sequins' placement will be improved for production

PANTS FW25-766

COMPOSITION: 100% POL

PRICE: 42 £

SIZES: 1-2-3-4-5



BLACK

MV 134



JACKETS FW25-792

COMPOSITION: 100% POL

PRICE: 62 £

SIZES: 1-2-3-4-5



BLACK

MV 137



FAUX FUR JACKETS FW25-805

COMPOSITION: 100% POL

PRICE: 78 £

SIZES: 1-2-3



BEIGE



BROWN



FAUX FUR JACKETS FW25-806

COMPOSITION: 100% POL

PRICE: 78 £

SIZES: 1-2-3-4-5



BEIGE



TAUPE



BLACK



GREY



CAMEL

FAUX FUR JACKETS FW25-807

COMPOSITION: 100% POL

PRICE: 70 £

SIZES: 1-2-3-4-5



BLACK



TAUPE



MERLOT



IVORY



GREY

T-SHIRTS FW25-900

COMPOSITION: 90% VISCOSE
10% ELASTANE

PRICE: 26 £

SIZES: 1-2-3-4-5



BLACK



IVORY



GREY



MERLOT



TAUPE

T-SHIRTS FW25-901

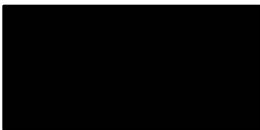
COMPOSITION: 90% VISCOSE
10% ELASTANE

PRICE: 26 £

SIZES: 1-2-3-4-5



TAUPE



BLACK



IVORY



MERLOT

T-SHIRTS FW25-904

COMPOSITION: 90% VISCOSE
10% ELASTANE

PRICE: 26 £

SIZES: 1-2-3-4-5